



Your contact details:

Title:

Name:

Company:

Customer no.

Street:

ZIP/postal code, city:

Country:

E-mail:

Phone:

Ordering spare parts

The spare parts for Type 3254 are listed on the next pages. This document can also be used for ordering:

1. Fill in your contact data and information on the product.
2. Enter the quantity of spare parts needed.
3. Click [Send form] button to attach the PDF form to an e-mail.
4. Attach additional information (e.g. invoice, photos) to the e-mail, if necessary.
5. Send e-mail to spareparts-de@samsongroup.com.

Either

Configuration ID (Var-ID):

or

SAMSON order no.:

Position in order:

or specifications on the nameplate

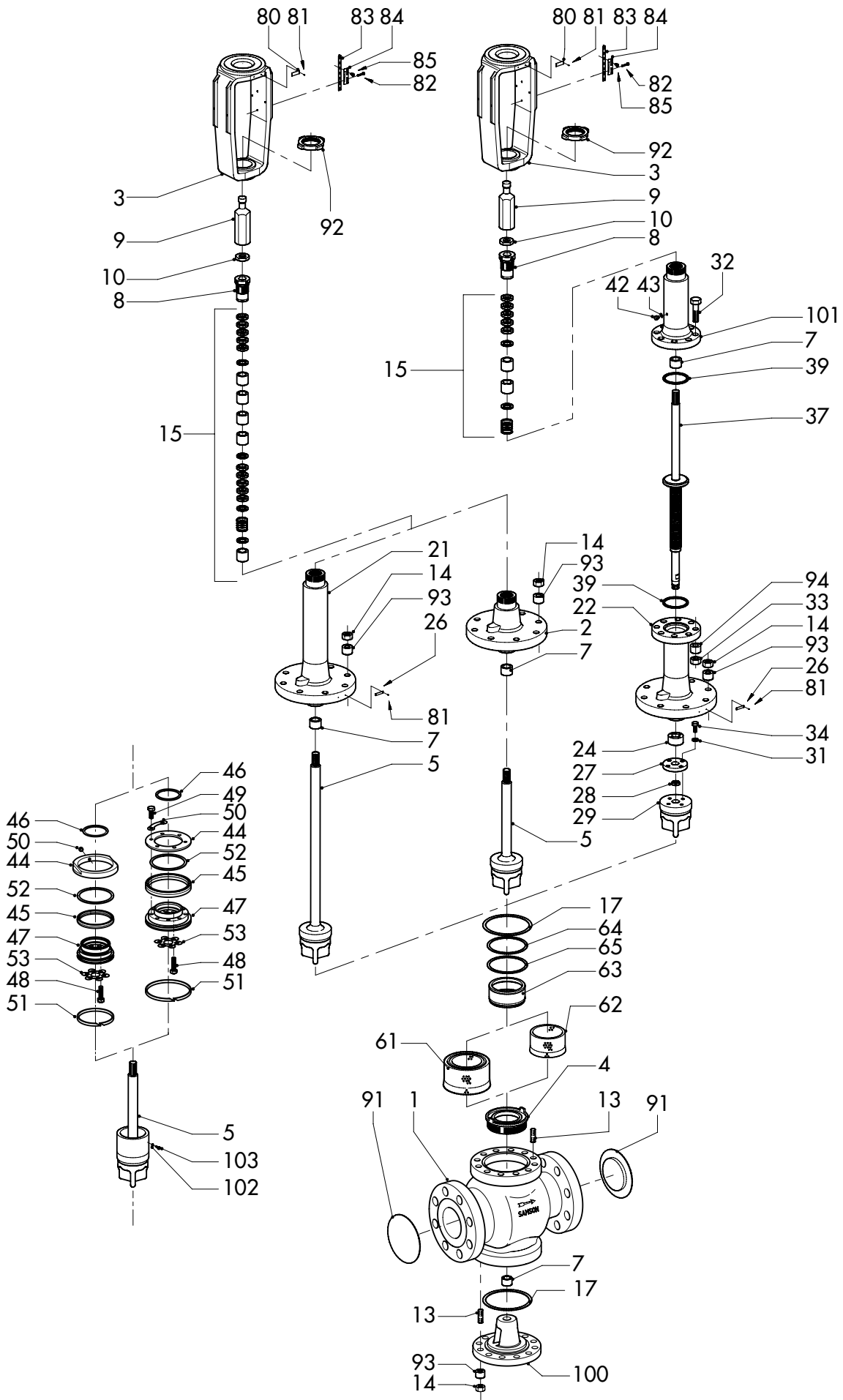
(description of the currently valid nameplate ► EB 8060)

Type designation:	<input type="text" value="3254"/>
Material:	<input type="text"/>
Nominal size:	<input type="text"/>
Pressure rating:	<input type="text"/>
Flow coefficient:	<input type="text"/>
Characteristic:	<input type="text"/>
Seat-plug seal:	<input type="text"/>
Seat code:	<input type="text"/>
Pressure balancing:	<input type="text"/>
Flow divider/AC trim:	<input type="text"/>
Version	<input type="checkbox"/> Standard bonnet <input type="checkbox"/> With insulating section <input type="checkbox"/> With bellows seal
Application	<input type="checkbox"/> NACE <input type="checkbox"/> Oxygen <input type="checkbox"/> Industrial gases <input type="checkbox"/> Chlorine

Send form

Print form

Clear form



Spare part no.		Qty.	Part subject to wear ¹⁾	Purity require- ments ²⁾
1	Body			•
2	Bonnet			•
3	Yoke			
4	Seat		•	•
5	Plug (with plug stem)		•	•
7	Guide bushing			•
8	Threaded bushing (packing nut)		•	•
9	Stem connector nut			
10	Lock nut			
13	Stud bolt		•	
14	Body nut		•	
15	Packing		•	•
17	Body gasket		•	•
21	Insulating section			•
22	Bellows seal			•
24	Guide bushing			•
26	Label (bellows seal or insulating section)			
27	Flange			•
28	Clamping ring		•	•
29	Plug for version with bellows seal		•	•
31	Washer		•	•
32	Bolt		•	
33	Nut		•	
34	Screw		•	•
37	Plug stem with metal bellows		•	•
39	Seal		•	•
42	Screw plug			•
43	Gasket		•	•
44	Ring/ring nut ³⁾			•
45	Packing ring ³⁾		•	•
46	Gasket ³⁾		•	•
47	Support ³⁾			•

Spare part no.		Qty.	Part subject to wear ¹⁾	Purity require- ments ²⁾
48	Hex screw ³⁾		•	•
49	Hex screw ³⁾		•	•
50	Lock ³⁾		•	•
51	Guide ³⁾ (several guides only for version with graphite seal)		•	•
52	Ring ³⁾ (only for version with graphite seal)			•
53	Snap ring ³⁾		•	•
61	Flow divider ST 2 ⁴⁾		•	•
62	Flow divider ST 1 or ST 3 ⁴⁾		•	•
63	Ring ⁴⁾			•
64	Gasket ⁴⁾		•	•
65	Gasket ⁴⁾		•	•
80	Nameplate			•
81	Grooved pin			
82	Screw			
83	Hanger			
84	Travel indicator scale			
85	Screw			
91	Protective caps			•
92	Castellated nut			
93	Expansion sleeve		•	
94	Expansion sleeve ⁵⁾		•	
100	Bottom diaphragm case			•
101	Bellows bonnet			•
102	Snap ring ³⁾ (only for version with bellows seal)		•	•
103	Screw ³⁾ (only for version with bellows seal)		•	•

¹⁾ Parts subject to wear are a subset of the spare parts, which are subjected to normal operational wear or fatigue.

²⁾ For certain applications (e.g. for oxygen service), this material is specified as "cleaned".

³⁾ Version with balanced valve plug

⁴⁾ Version with flow divider

⁵⁾ Only for DN 80 to 150/NPS 3 to 6

Specifications subject to change without notice
