

## Mounting Kit for Actuator Type R in Combination with Valve Series 82

ET004.001 EN

A bracket connects the actuator to the valve. The interface complies with **DIN EN ISO 5211**. A manual override as well as a positioner or other accessories can be mounted on the bracket. This mounting kit applies to rotary plug valves of series 82.

### ► Mounting kit R- actuator without manual override

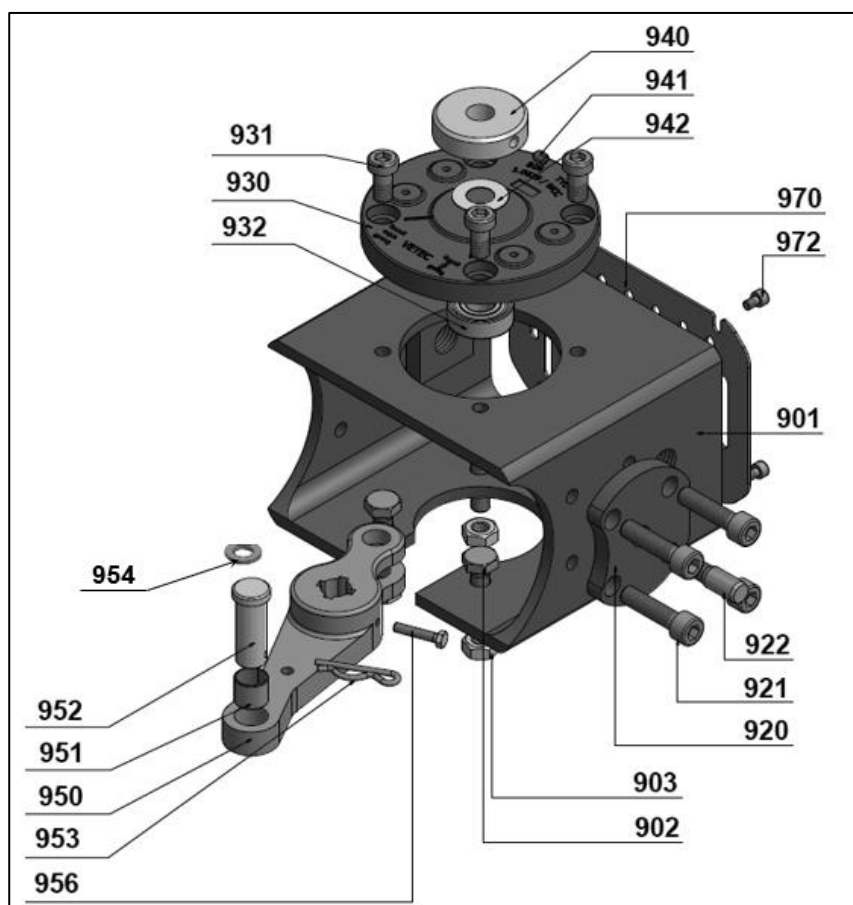


Fig. 1: Mounting kit R-actuator without manual override

Pos.	Description	Q
901	Bracket	1
902	Hex bolt	4
903	Hex Nut	4
908	Hex bolt (Limit stop)	1
909	Hex nut (Limit stop)	1
920	Spacer (DN 25 to 50)	1
921	Socket Screw	4
922	Cylinder Pin	1
930	Bearing Cover	1
931	Socket Screw	4
932	Groove Ball Bearing	1
940	Adjusting Ring	1
941	Threaded Pin	1
942	Washer	1
950	Lever	1
951	Sliding Bearing	1
952	Bolt	1
953	Spring Cotter	1
954	Washer	1
955	Socket Screw (Old version)	2
956	Hex Bolt (New version)	1
957	Pressure ring	1
958	Slide bearing	1
959	Bolt	1
960	Spring Cotter	2
961	Washer	2
970	Cover Plate	1
972	Socket Screw	4

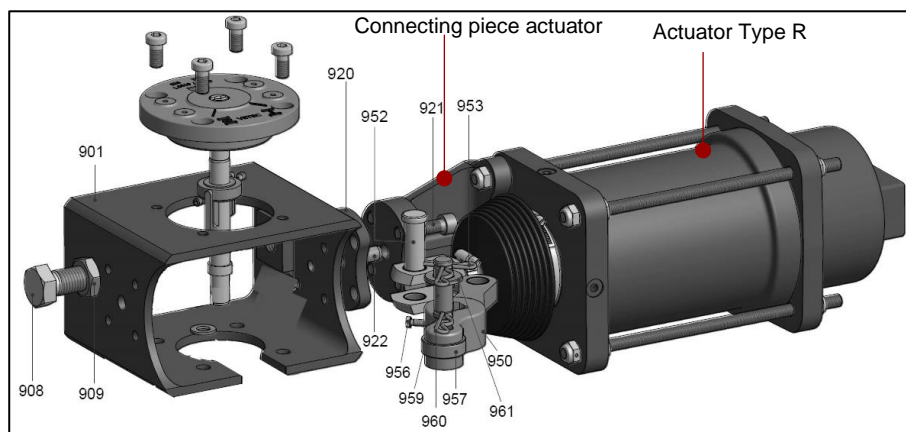


Fig. 2: Assembly drawing: R-actuator mounting kit without manual override

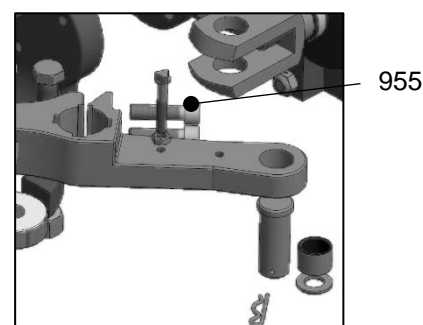


Fig. 3: Lever (Old version)

Edition January 2023 (Rev.01/22.08.23)

### ► Mounting kit R-actuator with handwheel

In the case of actuators with manual override, the valve can be opened or closed manually with a handwheel if the auxiliary power fails.

In combination with the following actuator sizes: R110, R110v, R150, R150v, R200

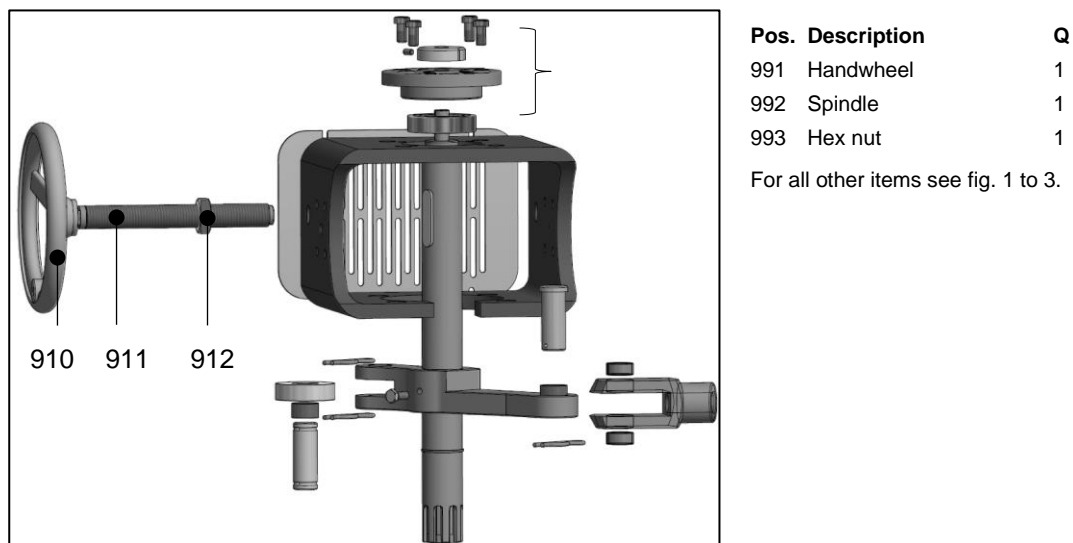


Fig. 4: Mounting kit R-actuator with handwheel

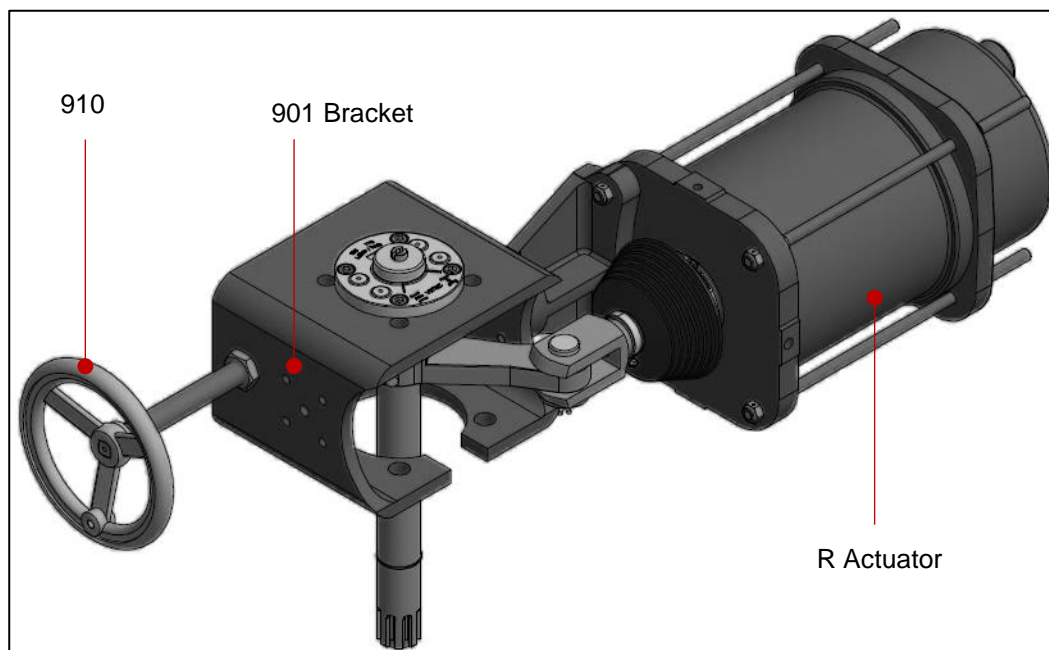
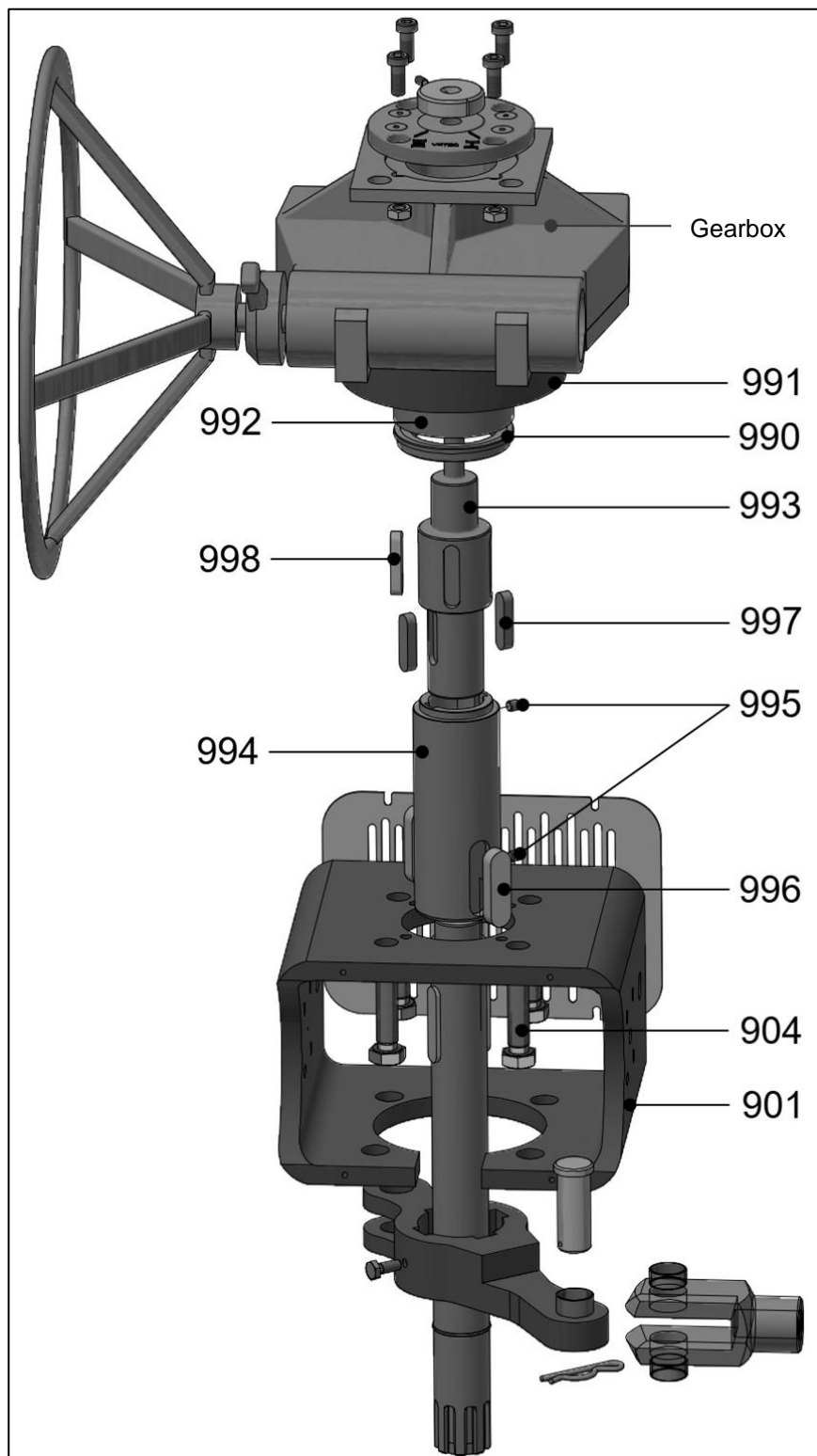


Fig. 5: Assembly drawing: Mounting kit R-actuator with handwheel

► **Mounting kit R-actuator with gearbox**

In combination with the following actuator sizes: R200v, R250, R250v, R250vv



Pos.	Description	Q
901	Bracket	1
904	Hex bolt	4
990	Centring ring	1
991	adapter plate	1
992	Needle bearing	1
993	Adapter shaft	1
994	Adapter bushing	1
995	Threaded pin	2
996	Feather key	2
997	Feather key	2
998	Feather key	1

For all other items see fig. 1 to 3.

**Fig. 6:** Mounting kit R-actuator with gearbox